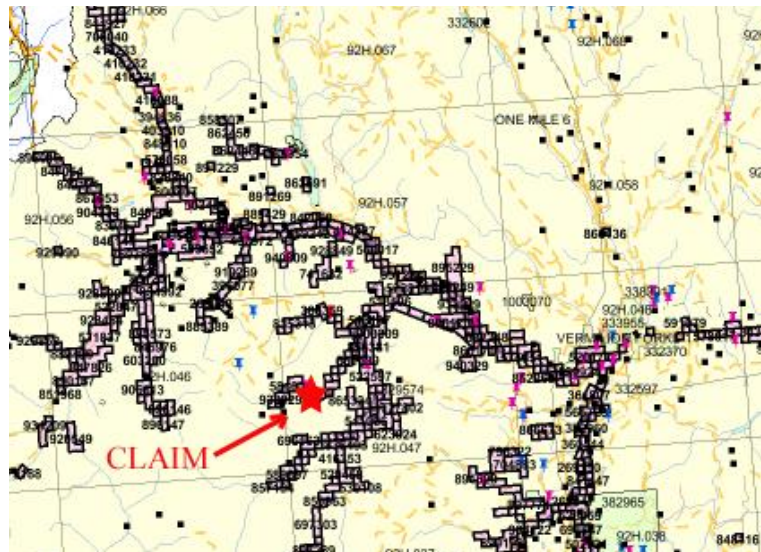


The Newton Nugget – Placer Gold and Platinum Claim

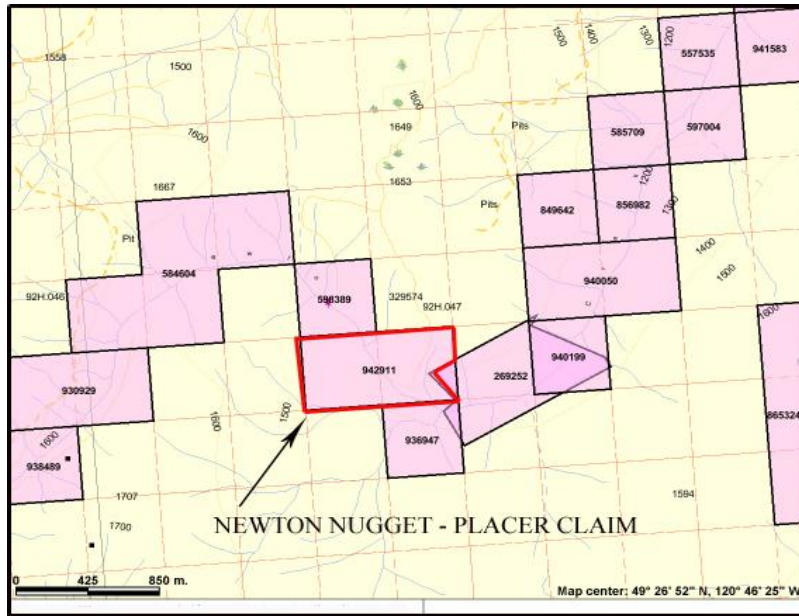
Newton Creek is a well-known past producer of course gold and platinum it flows east to northeast, over a distance of about 11 kilometres, into Granite Creek, west of Princeton in the famous Tulameen placer gold camp. The creek originates from Lodestone Mountain on which a significant deposit of Iron and Vanadium with Platinum is known to occur.



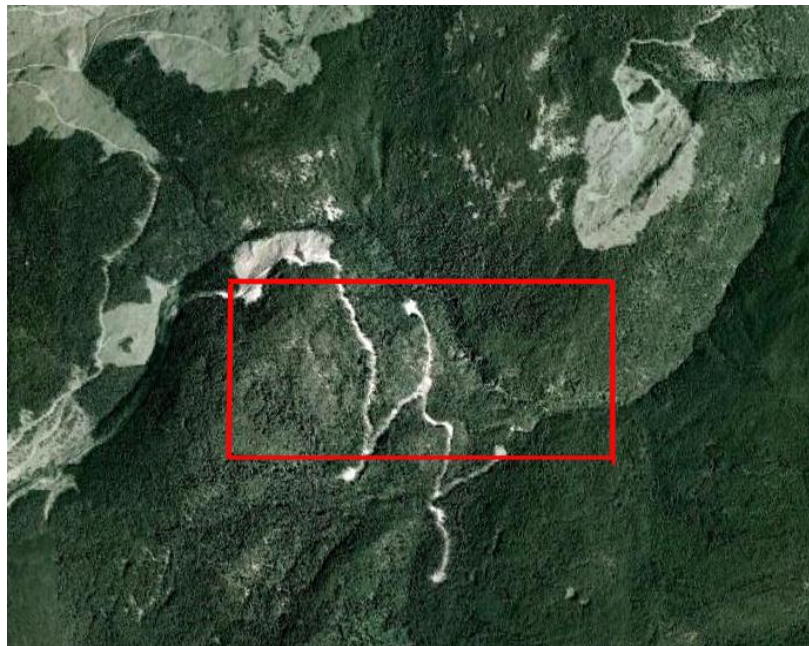
The lower half of the creek cuts through a narrow steep-sided valley while the upper half flows over a broader, more open valley floor. The **Newton Nugget** claim is located in the heart of the Tulameen placer camp in an area where course gold and platinum has been mined before.

The gold and platinum were produced from gravels in this creek between 1890 and 1893. The gold to platinum ratios is reported to be 1:1 and the gold is similar to that found in famous Granite Creek. The gold is coarse and rough, with some of the larger nuggets containing quartz fragments.





Total gold production is estimated at 6500 grams from primitive mining methods. It is believed that this claim has never been worked with modern methods or with machinery. The claim now has good logging road access.



Contact Rich River Exploration for further information... 250-832-2089